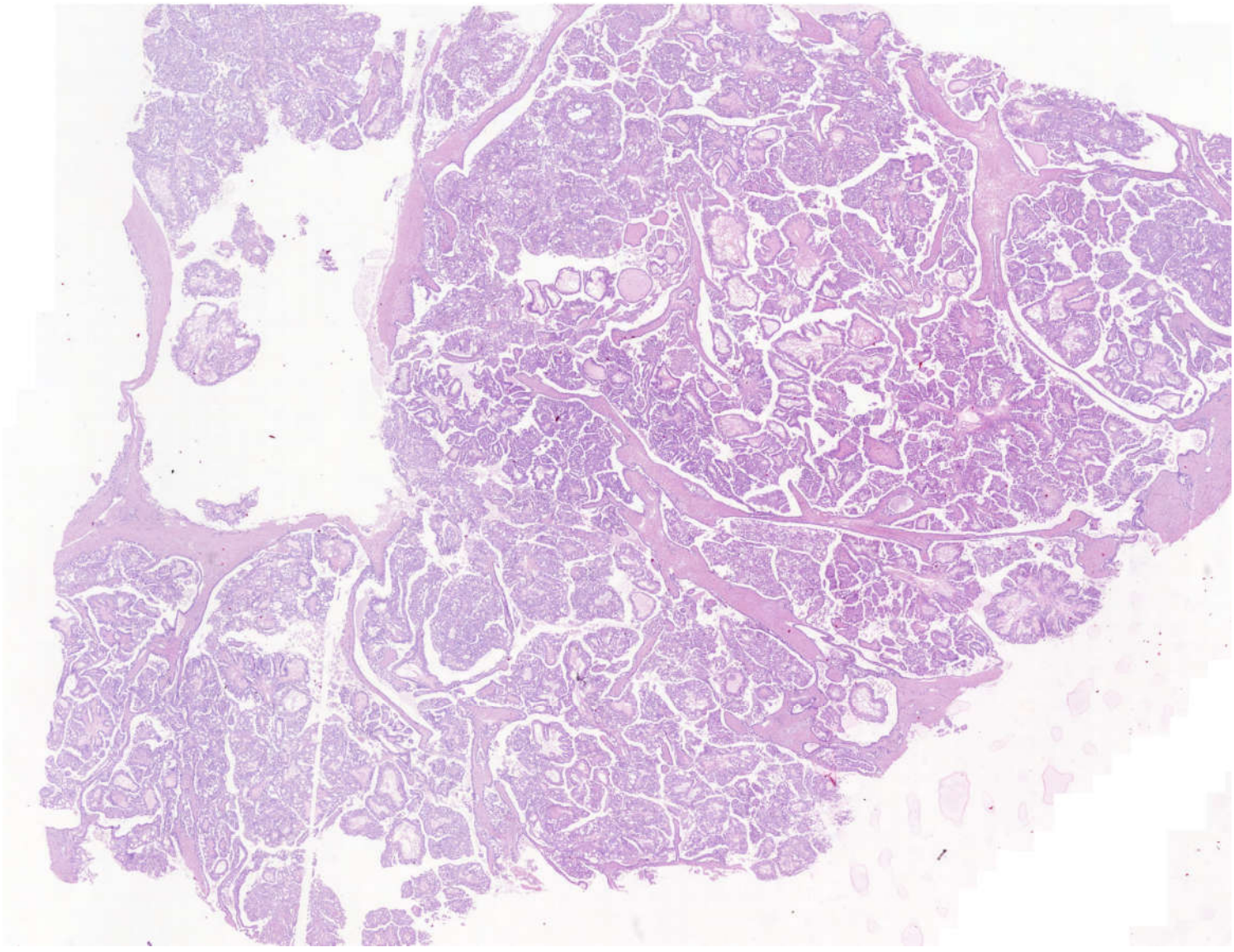
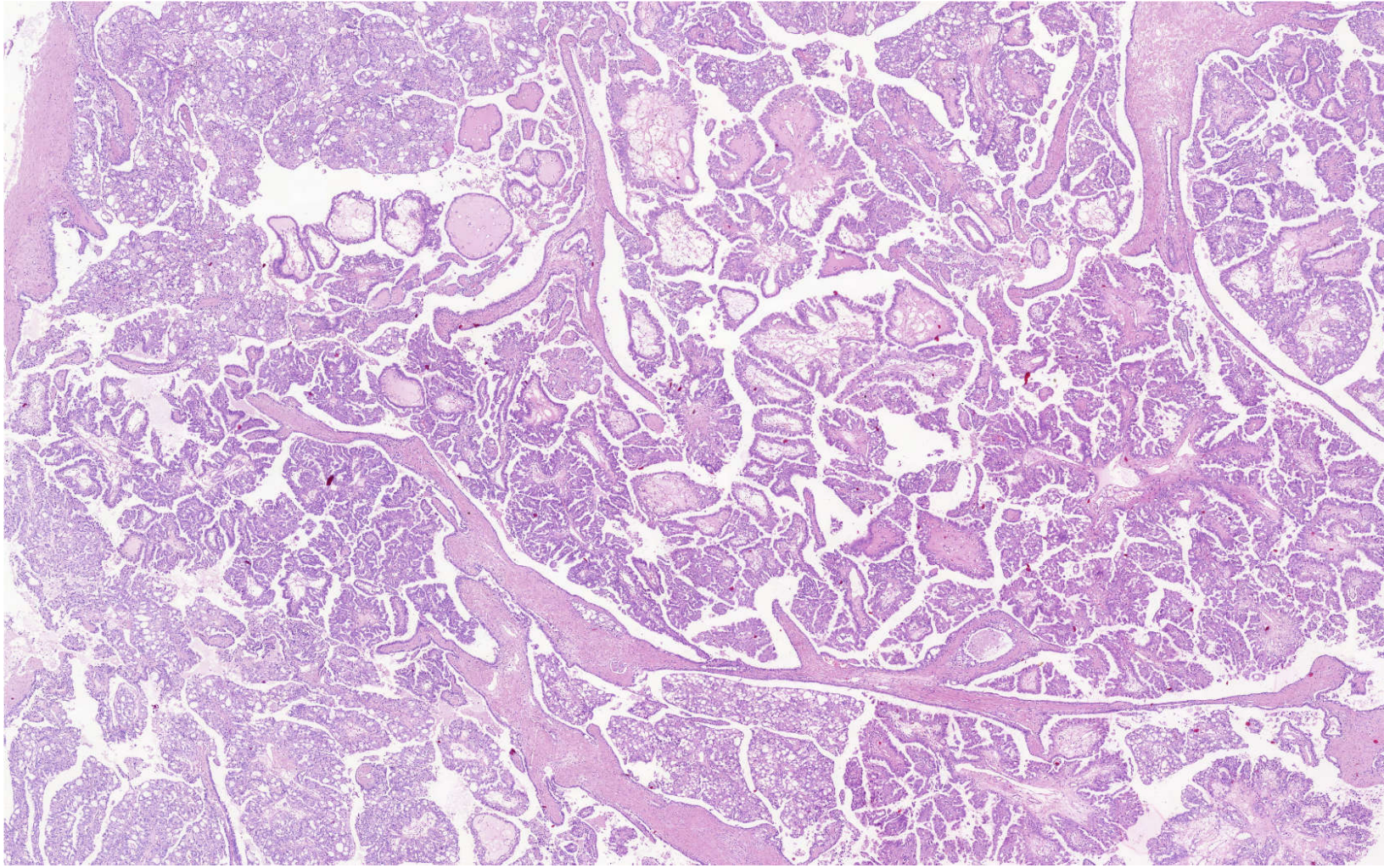


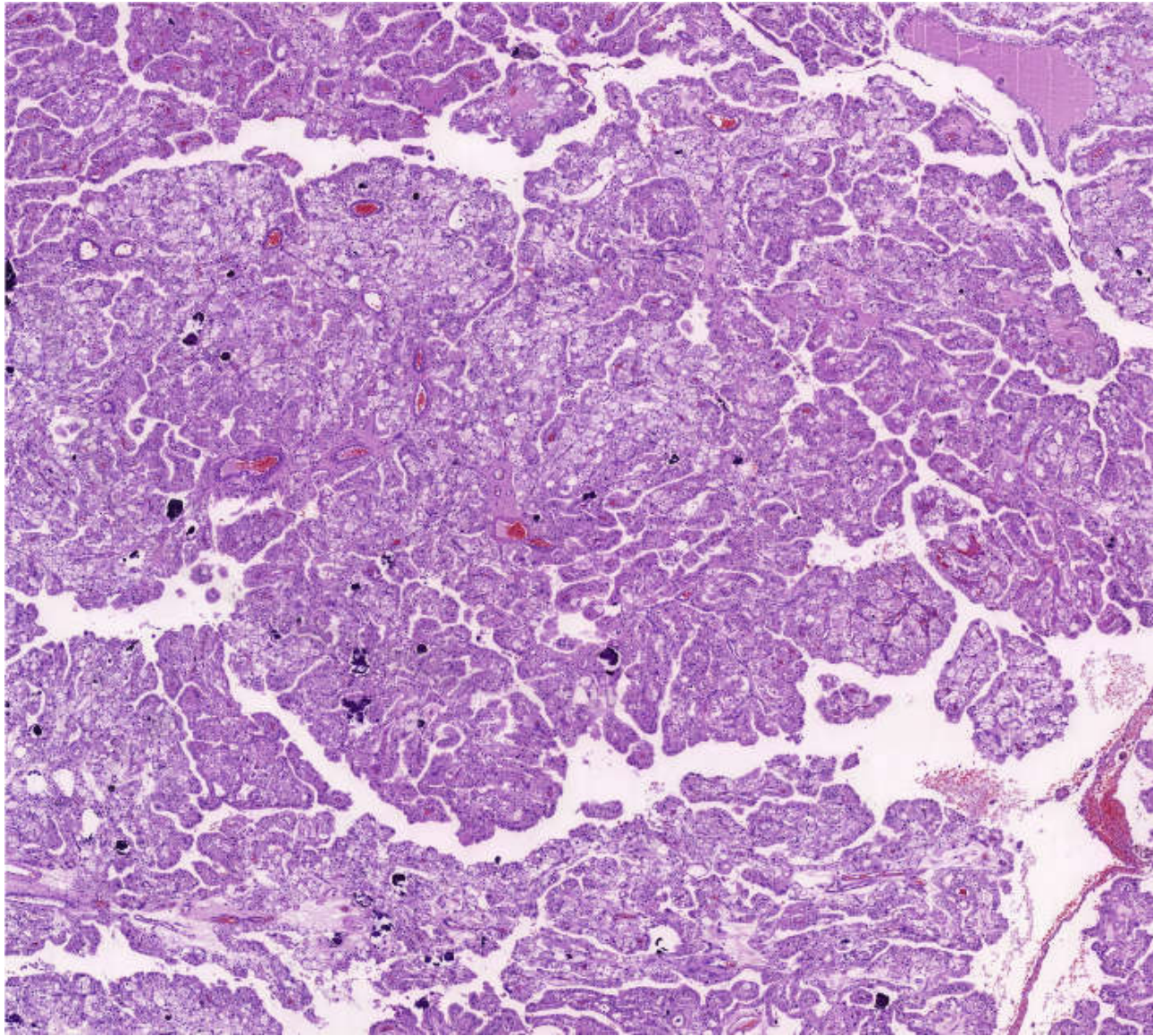
55-letý muž

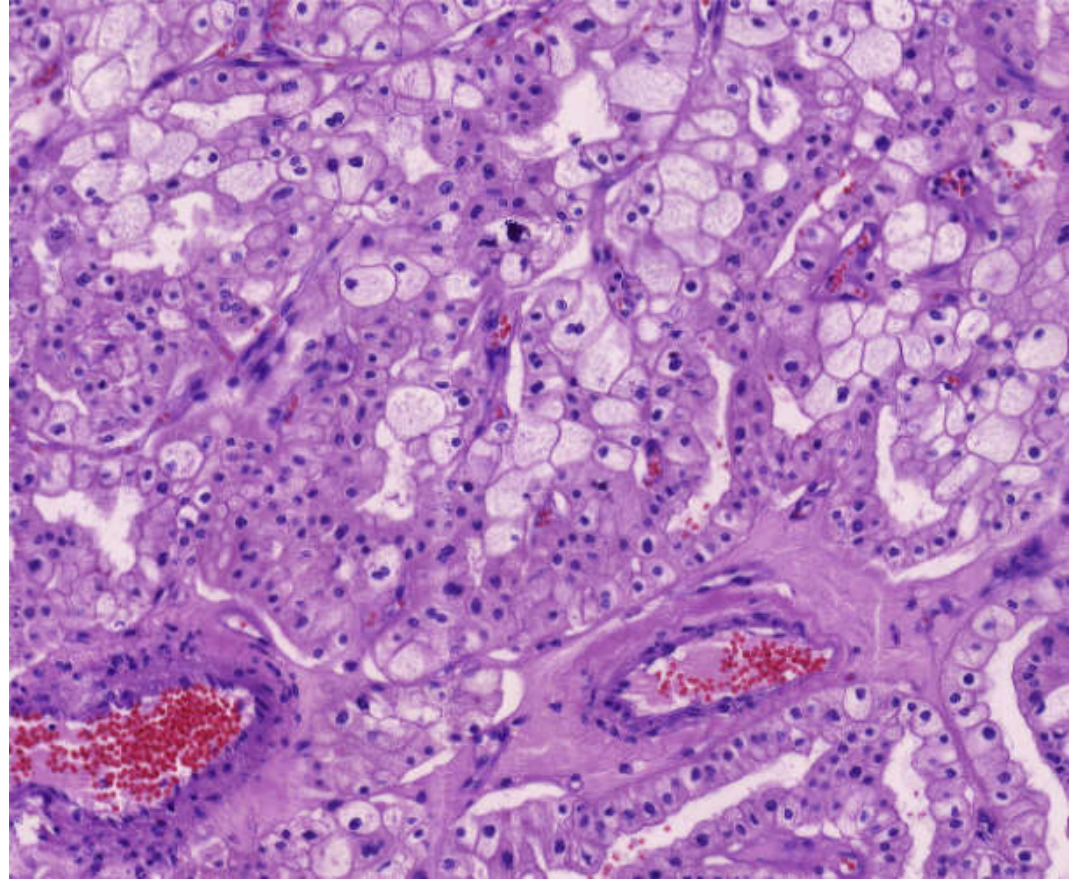
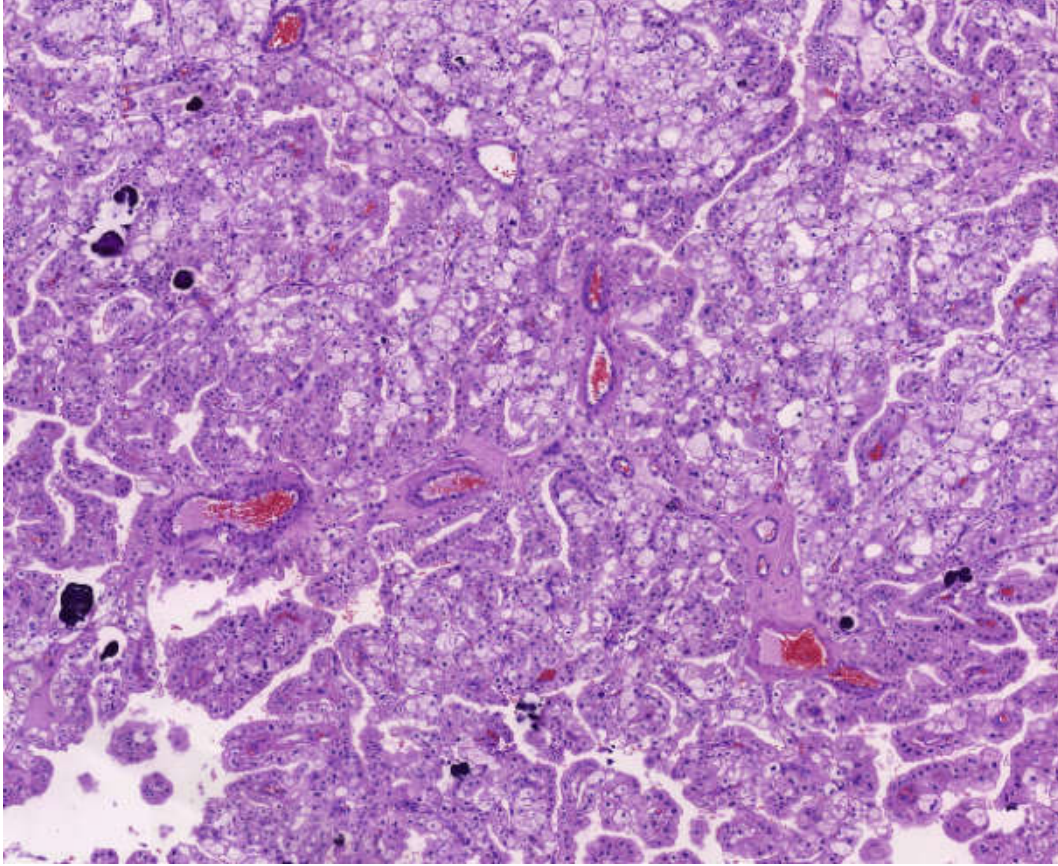
Tumor ledviny 12 x 4 x 6 cm, pT3a

Případ získán laskavostí MUDr. Ivana Feráka





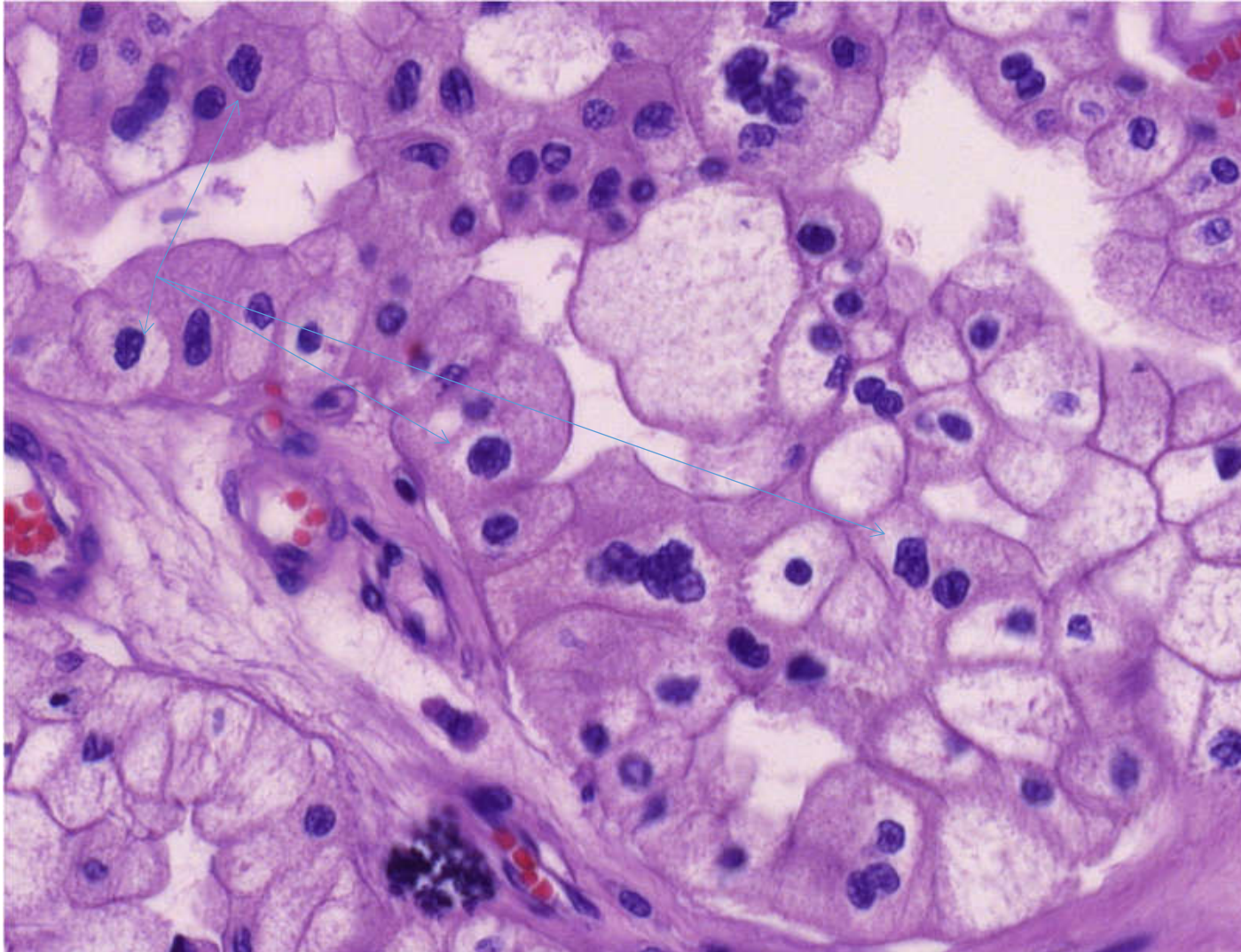




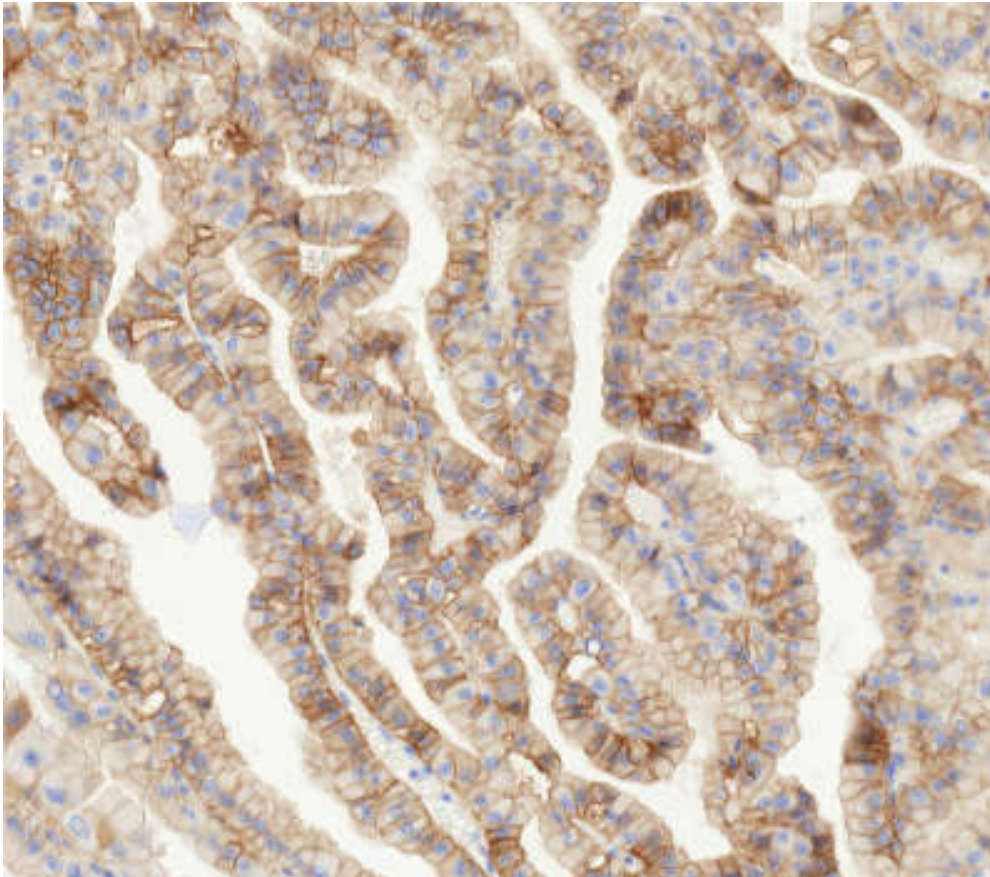
???? Otázky?



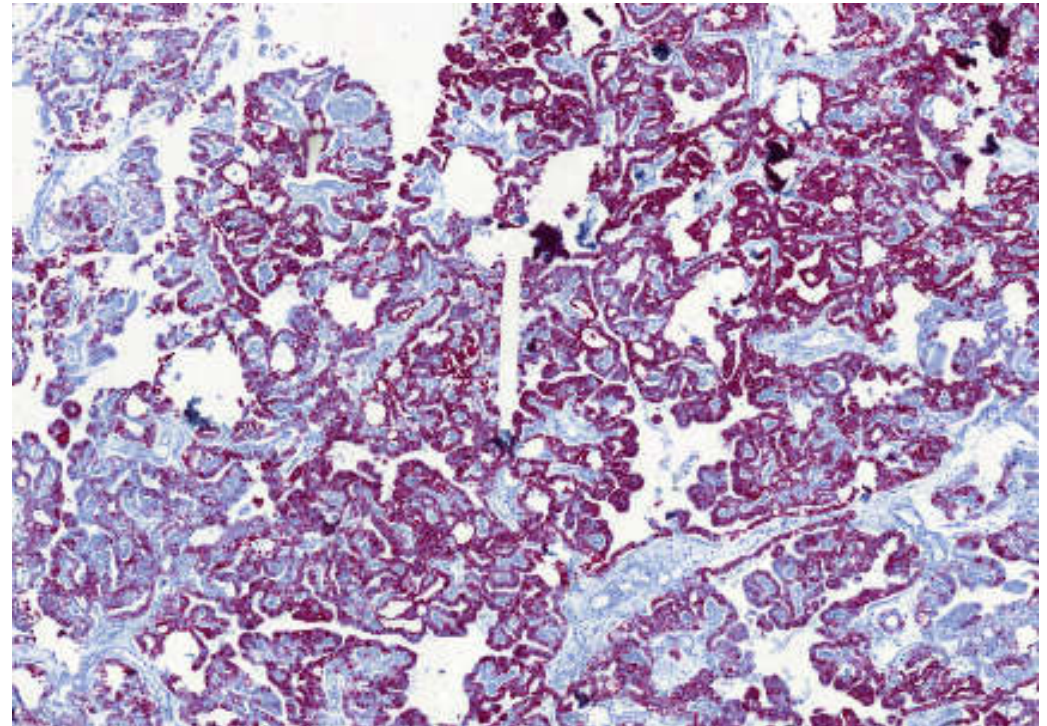
Raisinoidní jádra



Immunohistochemické vyšetření

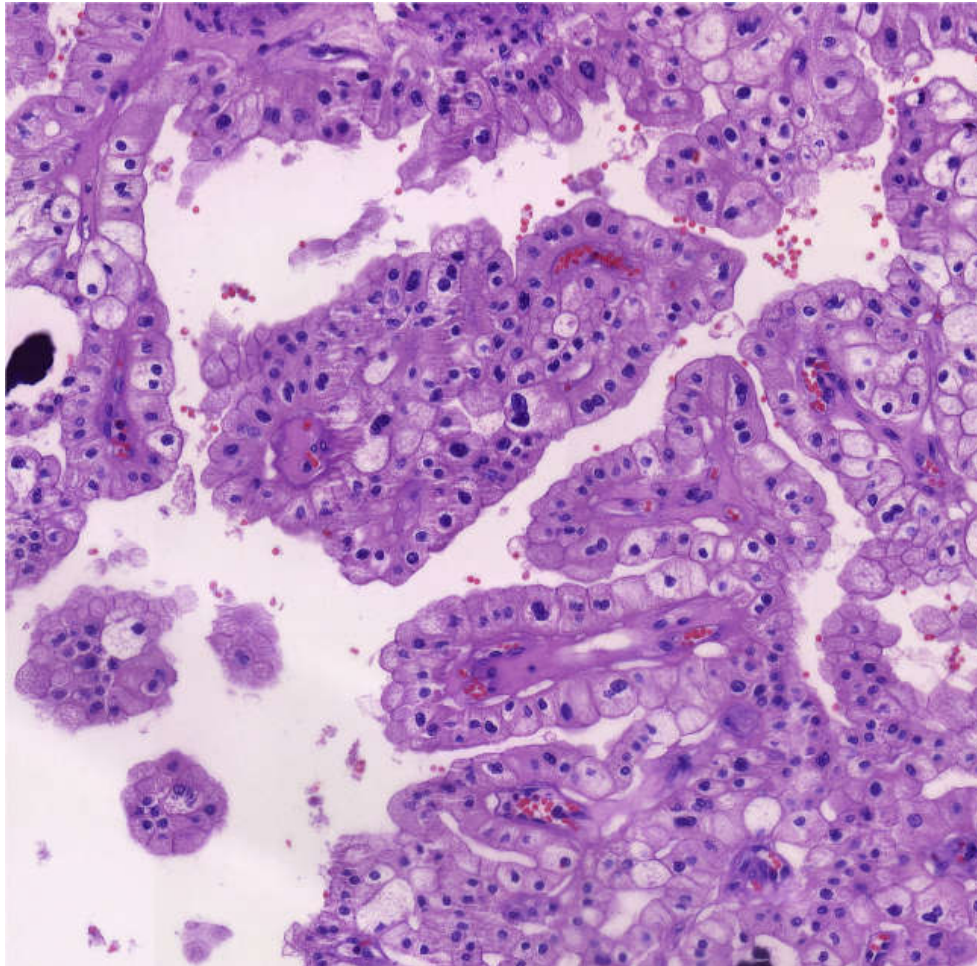


CD117

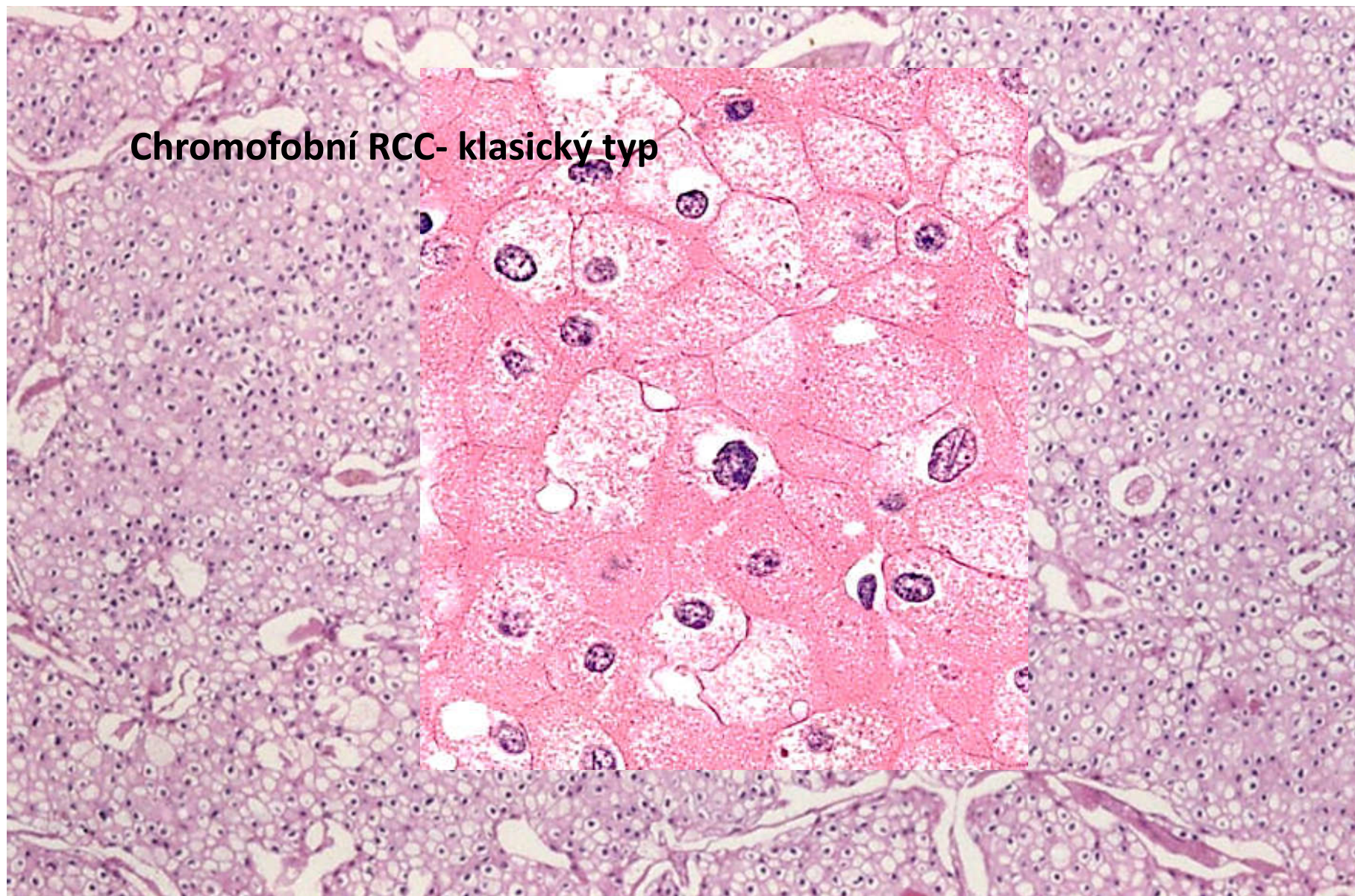


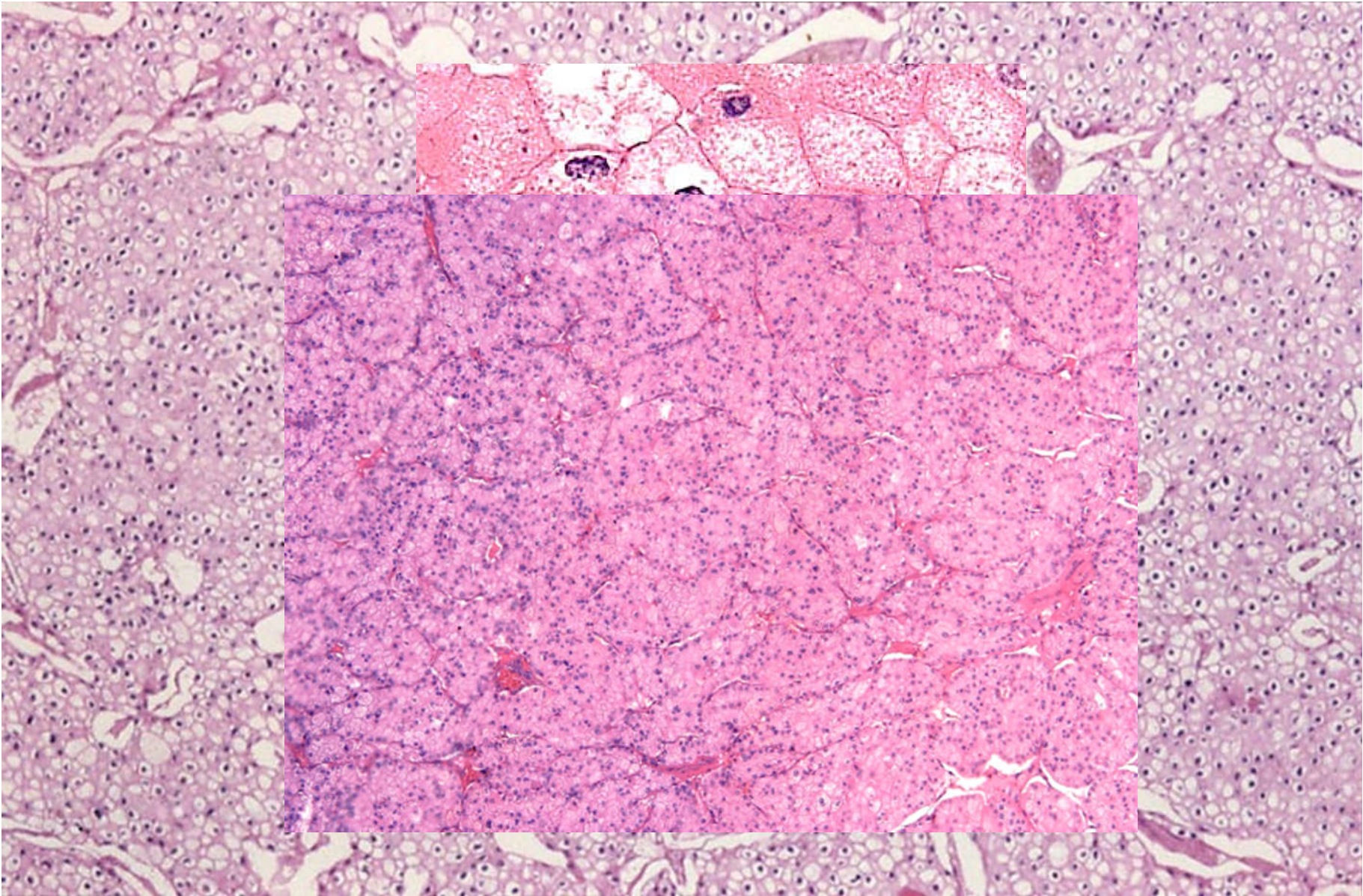
CK 7

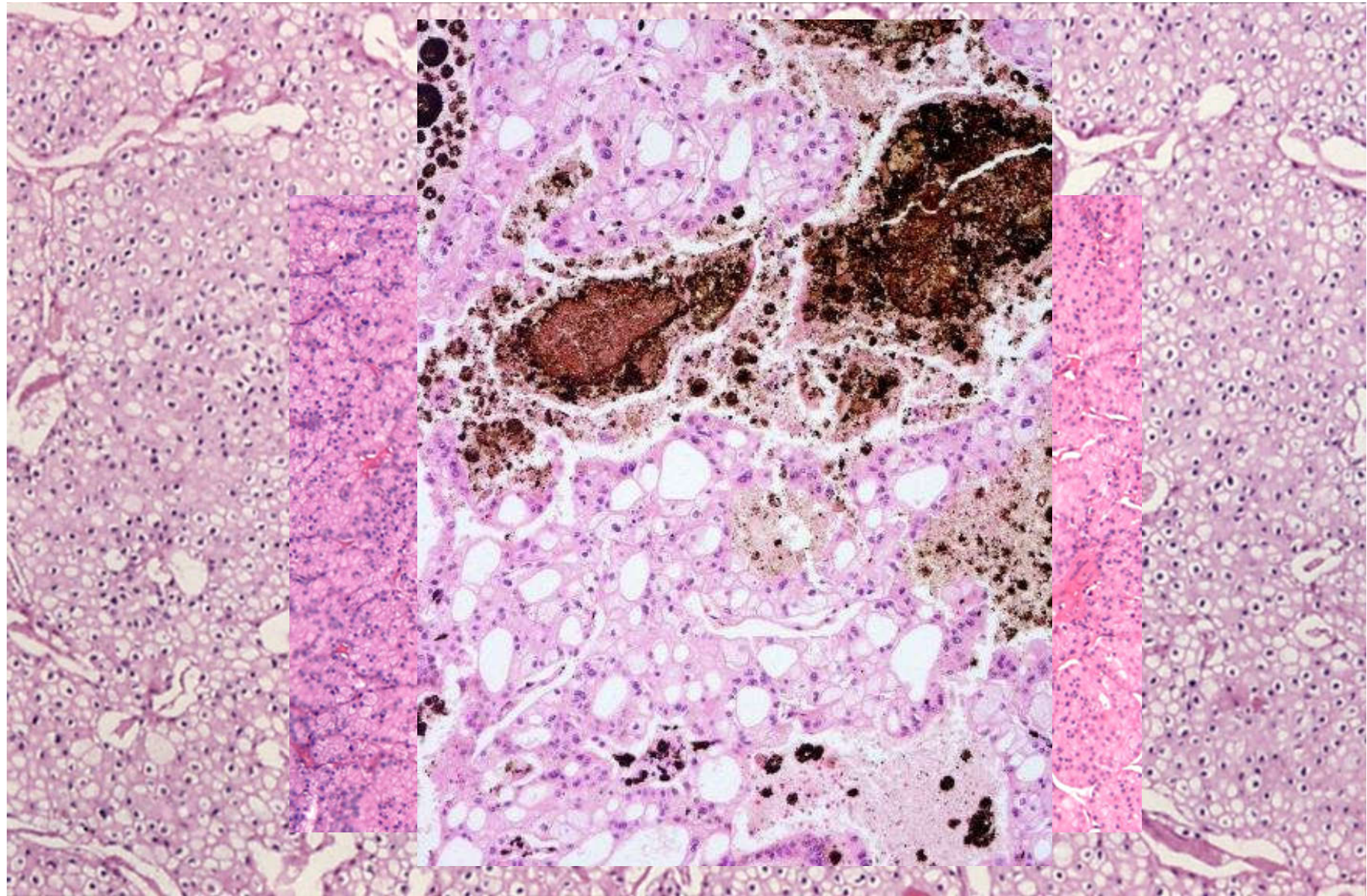
Chromofobocelulární RCC- papilární pattern

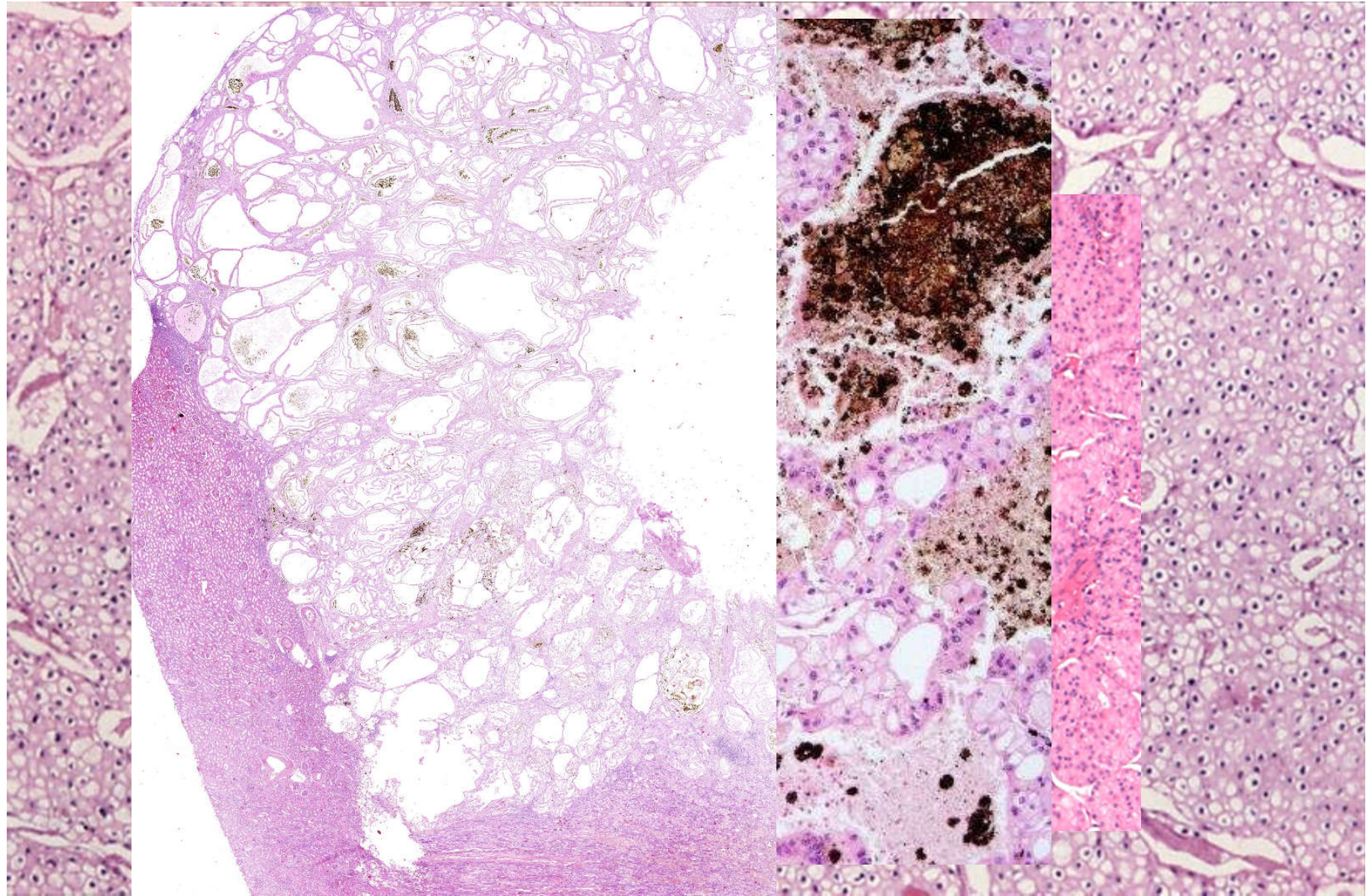


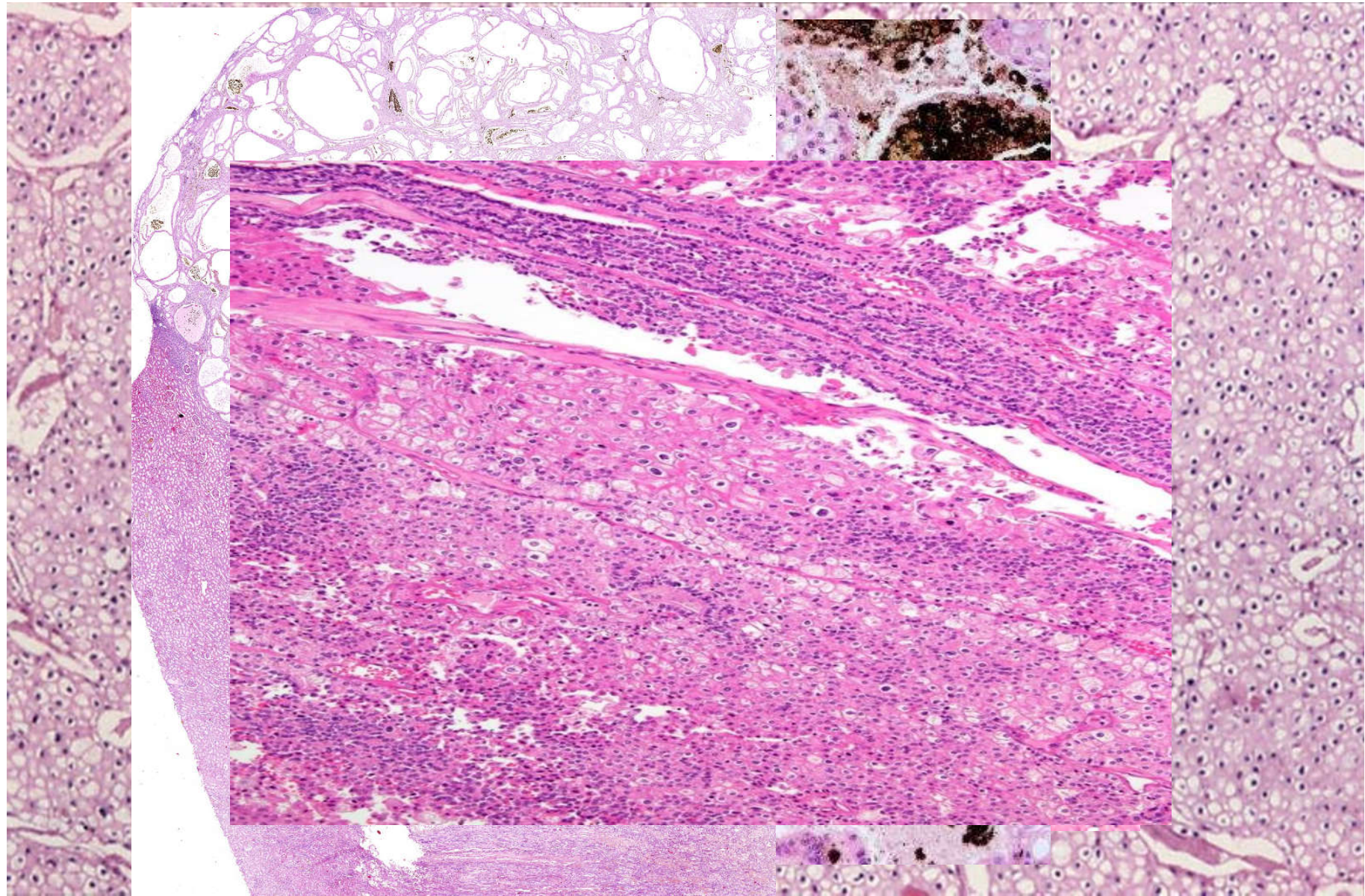
Chromofobní RCC- klasický typ





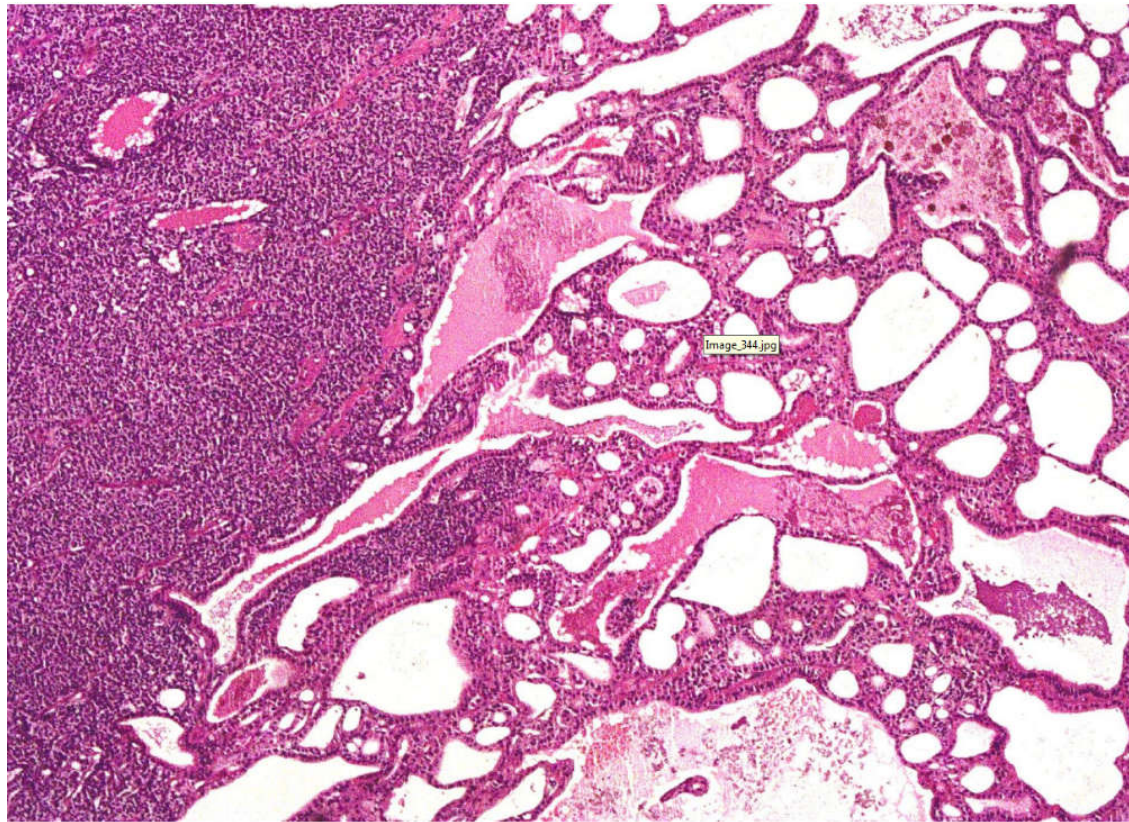


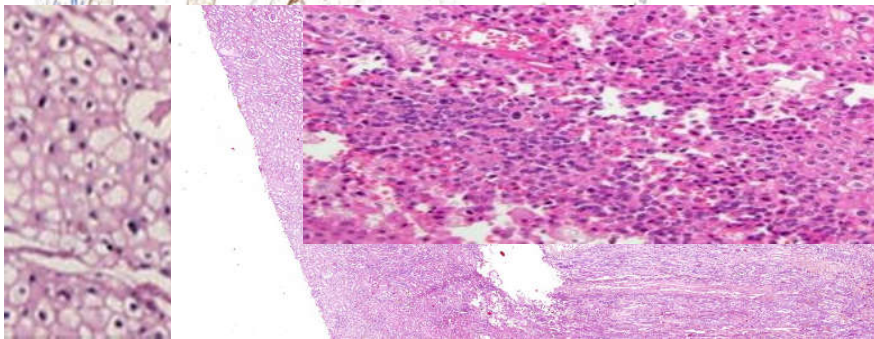
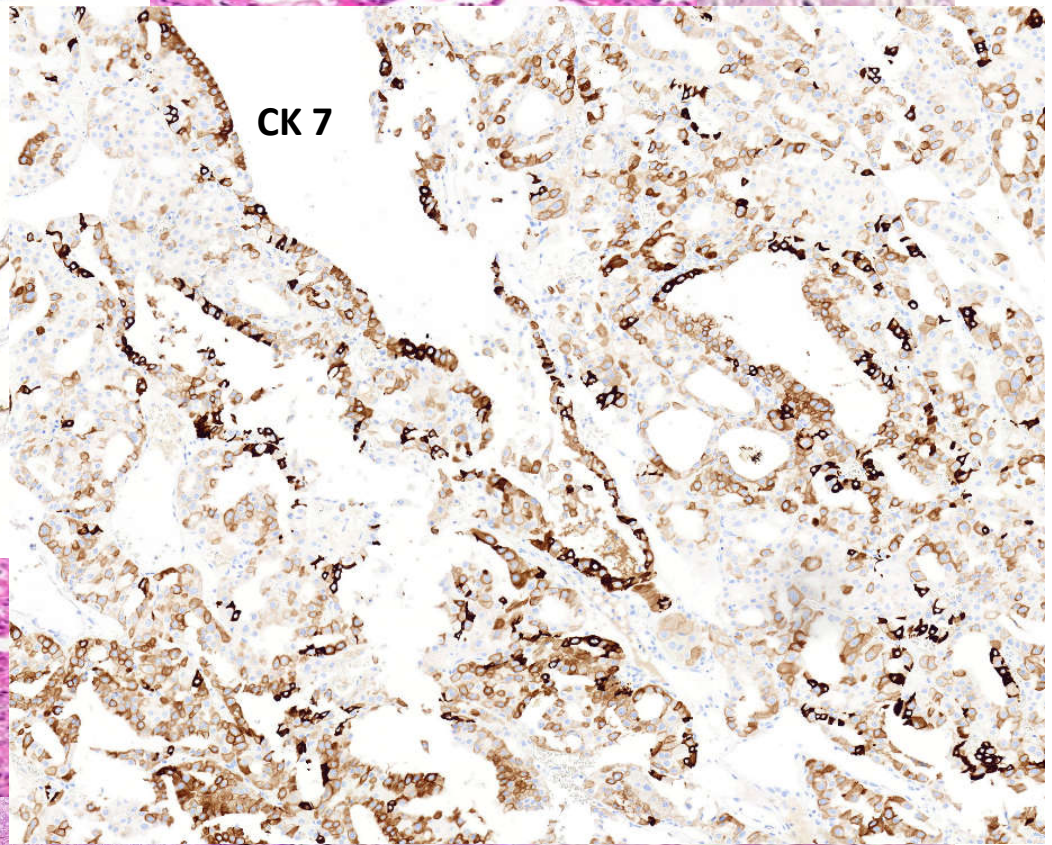
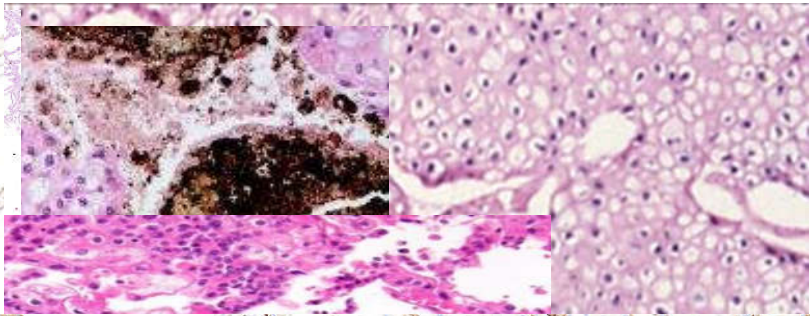
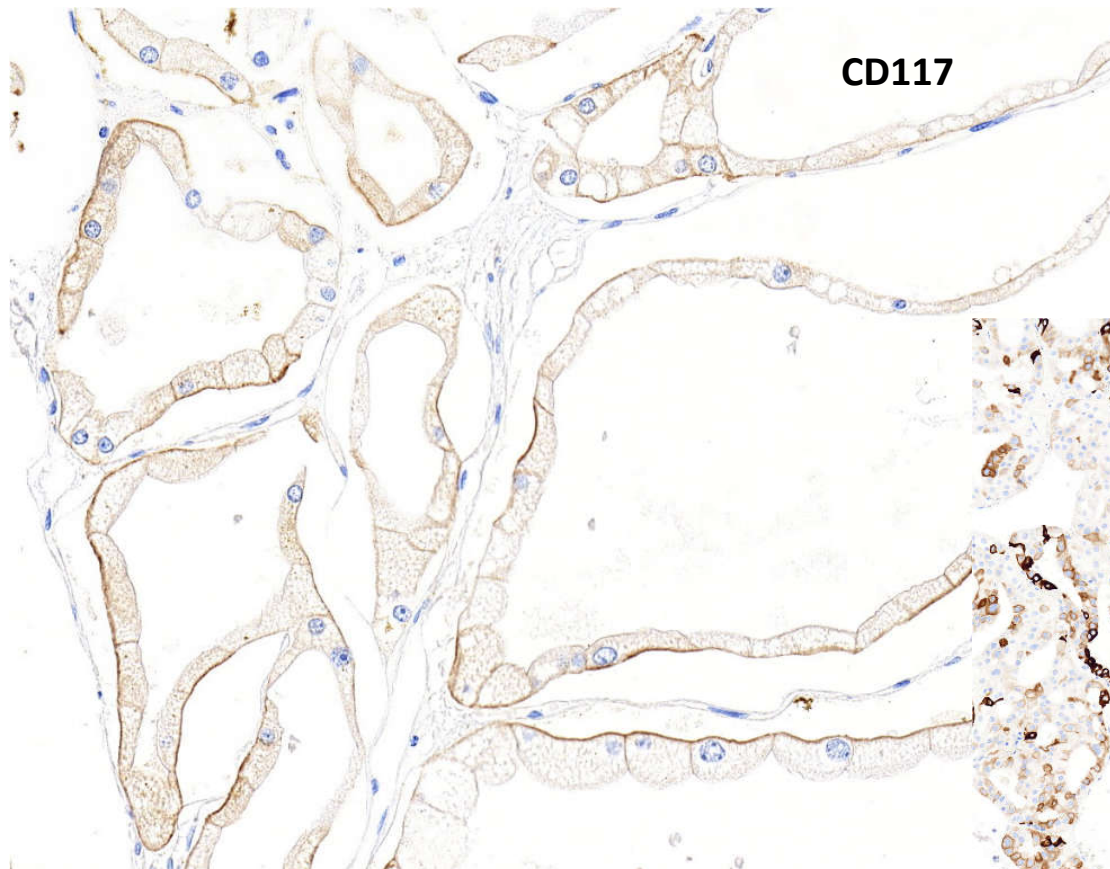




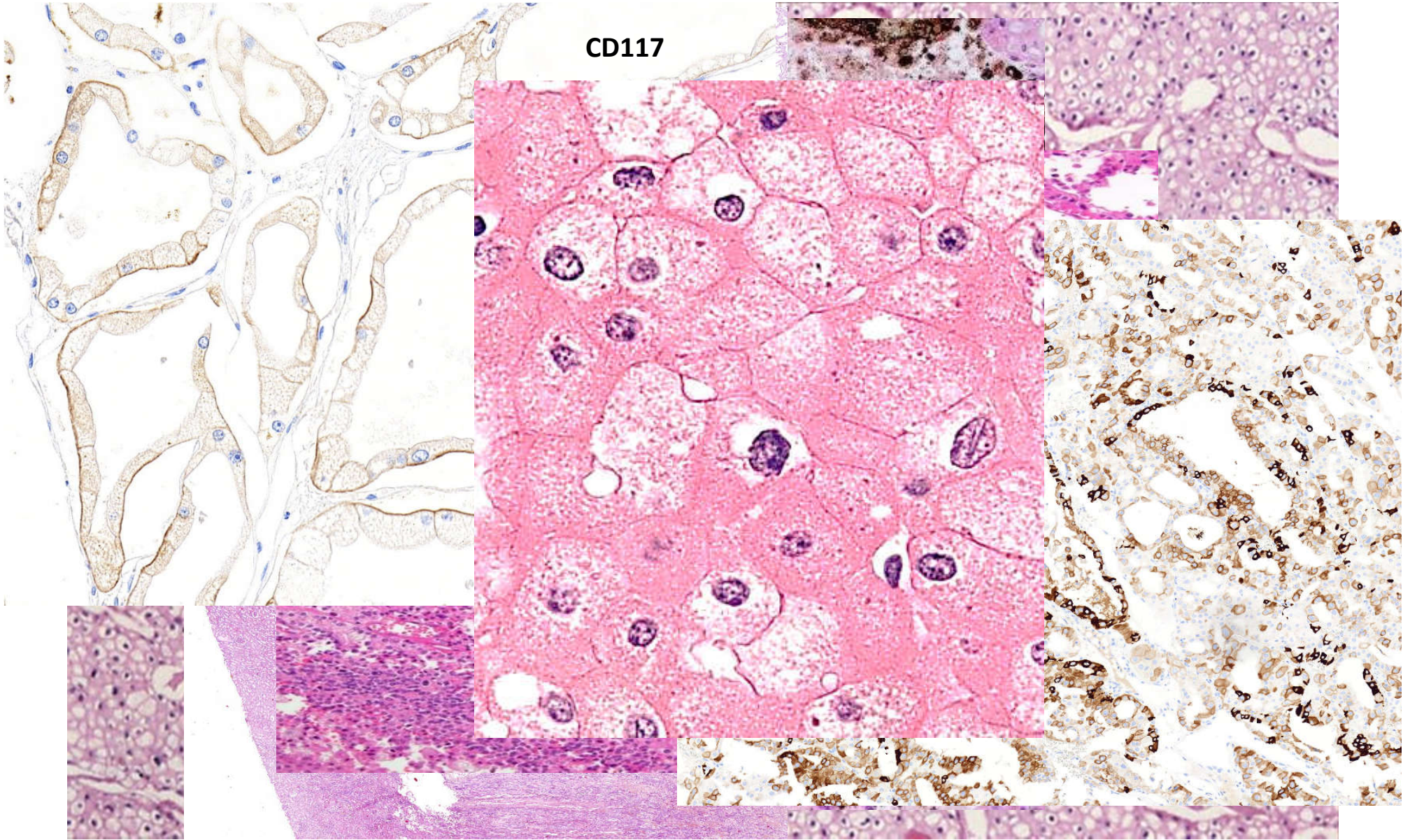
Malobuněčná varianta???

Laskavostí Stely Bulimbasic, MD, PhD- Zagreb





CD117

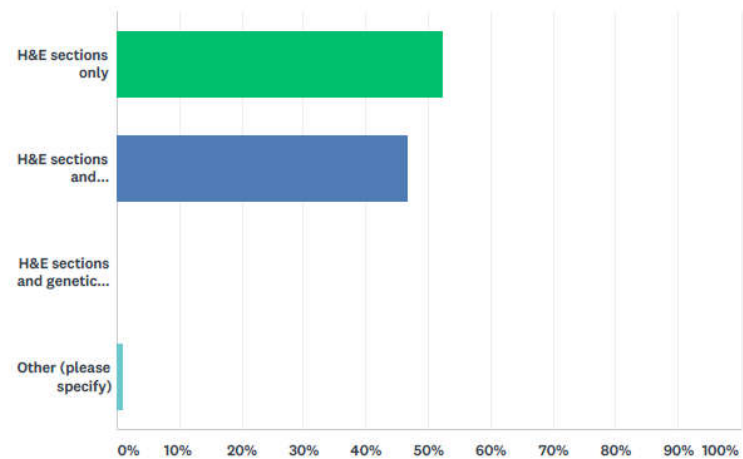


Chromophobe renal cell carcinoma

ISUP Consensus Conference of Molecular Genitourinary Pathology

Q54 For a morphologically typical chromophobe renal cell carcinoma on a (partial) nephrectomy resection, what do you generally use for diagnosis?

Answered: 208 Skipped: 48



ANSWER CHOICES	PERCENTAGE	RESPONSES
H&E sections only	52.40%	109
H&E sections and immunohistochemistry or Colloidal Iron	46.63%	97
H&E sections and genetic analysis (e.g. FISH, sequencing, CGH, etc)	0.00%	0
Other (please specify)	0.96%	2
TOTAL		208

Chromofobní RCC- genetické testování

- **BHD (folliculin)** pro podivné chromofobní tumory, oncocytozu, HOCT
- Enumerace chromosomů? Literatura (monografie, učebnice, WHO, etc): loss of Y, 1, 2, 6, 10, 13, 17, 21
- ALE větší sestavy ukazují **gains** (4, 7, 15, 19, 20) a **losses**, dokonce **diploidní** status (Tan 2010, Vieira 2010, Sperga 2013)

Závěry

- CHRCO je obvykle solidně alveolární ALE
- Popsáno mnoho variant
- Cytologie+IHC pomůže

Závěry

- CHRCC je obvykle solidně alveolární ALE
- P **„Raisinoidní“ jádro a perinukleární halo jsou artefakt**
- Cytologické pomůcky
- Molekulární genetika zatím mnoho nepomáhá

Závěry

- CHRCC je obvykle solidně alveolární ALE
- P „Raisinoidní“ jádro a perinukleární halo jsou artefakt
- Cytologie+IHC pomůže

Expanding the morphologic spectrum of chromophobe renal cell carcinoma: A study of 8 cases with papillary architecture.

Michalova Kvetoslava, MD, PhD¹, Maria Tretiakova, MD, PhD², Pivovarcikova Kristyna, MD, PhD¹, Reza Alaghebandan, MD, FRCPA³, , Perez Montiel Delia, MD⁴, Ulamec Monika, MD, PhD⁵, Osunkoya Adeboye, MD⁶, Trpkov Kiril, MD, FRCPA⁷, Grossmann Petr, PhD¹, Sperga Maris, MD⁸, Ferak Ivan, MD, CSc⁹, Rogala Joanna, MD¹, Mareckova Jana MD¹, Michal Michal, MD¹, and Hes Ondrej MD, PhD¹



Děkuji za pozornost



Kousek za Tschokwane
Kruger, 2018